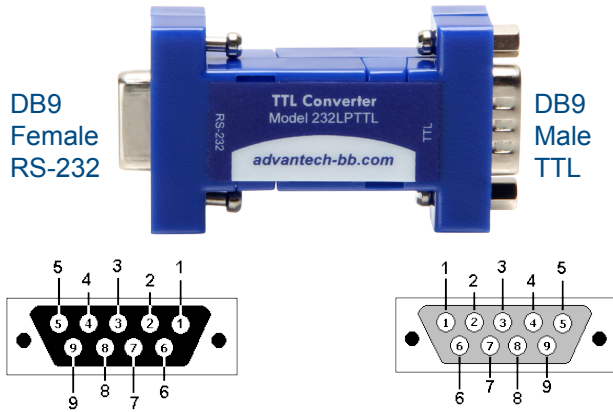


Product Overview



1 Pinouts

Pin 5 is signal ground for both connectors. Both models are powered by the signals on pins 7(RTS), 4(DTR), and 3(TD). These handshake lines can be in either the high or low condition, but must be present to power the converter. The unit can work at baud rates up to 115.2 kbps.

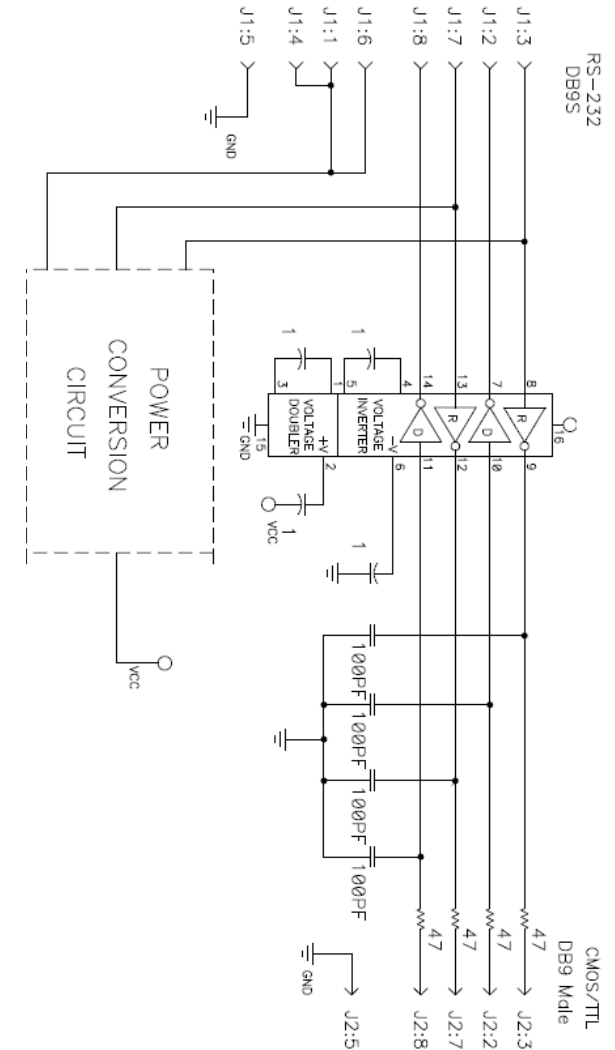
It is important that TTL/CMOS logic, and only TTL/CMOS logic (0 to +5 VDC for the 232LPTTL, and 0 to +3.3VDC for the 232LPTTL33) is used for the TTL/CMOS side of the converter. The maximum sinking current for one TTL/CMOS output is 3.2 mA. The maximum source current for one TTL/CMOS is 1 mA. Signal levels are inverted by the converters. Please refer to table below.

RS-232 Pin	Function	TTL/CMOS Pin
3 (input)	TD	3 (output)
2 (output)	RD	2 (input)
7 (input)	RTS	7 (output)
8 (output)	CTS	8 (input)
5 (signal gnd)	GND	5 (signal gnd)

2 Polarity

232LPTTL	232LPTTL33	RS-232 Output
5VDC TTL/CMOS Input	3.3VDC TTL/CMOS Input	RS-232 Output
Low (< .8V)	Low (< .8V)	+5V minimum, +9V typical
High (>2V)	High (>2V)	-5V minimum, -9V typical
5VDC TTL/CMOS Output	3.3VDC TTL/CMOS Output	RS-232 Input
+3.45V minimum, +4.6V typical	+2.4V minimum, +3.0V typical	Low (< .2V)
+5.5V maximum, +.1V typical	+5.5V maximum, +.1V typical	High (>2.4V)

3 Schematic



+ This unit is powered from the RS-232 data and handshake lines, whether the lines are high or low.



Recommended Accessories

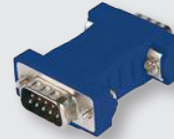
9PAMF6

DB9 Male to
DB9 Female Cable



MMNM9

Null Modem Adapter
DB9 Male/DB9 Male



QUICK START GUIDE



232LPTTL & 232LPTTL33

5VDC

3.3VDC

Four Channel RS-232 to TTL/CMOS Converter

Before you begin, be
sure you have the following:

- + 232LPTTL or 232LPTTL33
Converter
- + Serial Cable

B+B SMARTWORX

Powered by

ADVANTECH

1-888-948-2248 | Europe: +353 91 792444

advantech-bb.com

707 Dayton Road | PO Box 1040 | Ottawa, IL 61350

Phone: 815-433-5100 | Fax: 815-433-5109

www.advantech-bb.com | E-mail: support@advantech-bb.com

B+B SMARTWORX

Powered by

ADVANTECH

Fast and easy on the web: www.advantech-bb.com