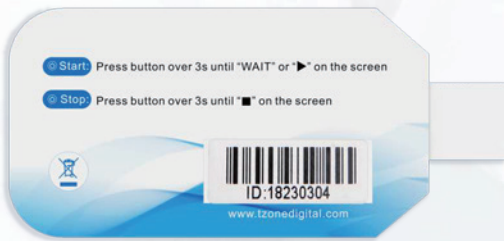




SINGLE-USE PDF/CSV TEMP DATA LOGGER



TempU09



Auto PDF/CSV Report

Automatically generated PDF/CSV format report, no software required to access data file



Intuitive LCD Indication

LCD presents all key information including checking current temperature, alarm status, battery power



Large Capacity for Longer Recording Trip

32000 points of data capacity enable it maximumly works around 210 days based on default data interval



APPLICATIONS



Biochemical laboratory



Medical storage



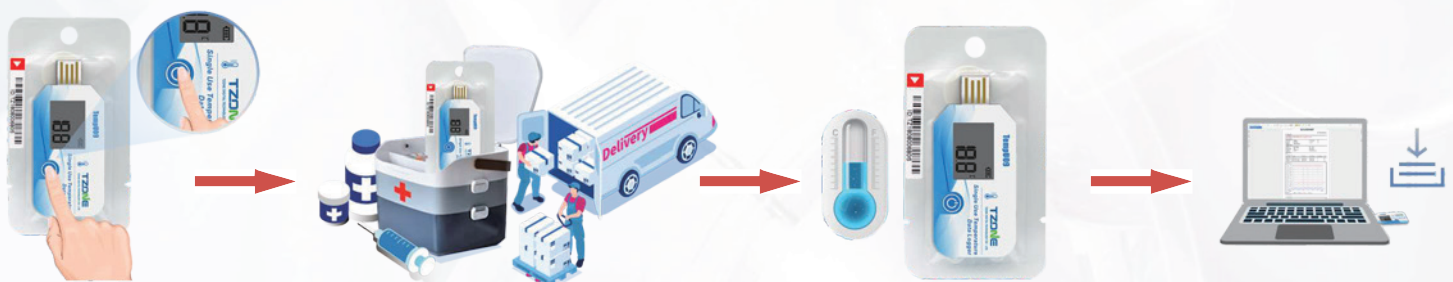
Fruit and vegetable storage



Cold-chain transportation

SINGLE-USE PDF/CSV TEMP DATA LOGGER

HOW TempU09 WORKS



Press the button to start

Put it in the medical fridge

Logging temperature

Connect PC to get PDF/CSV report

TempU09

Dimensions	106mm*55mm*7.3mm
Weight	25g
Battery Shelf Life	2 years
Measuring Range	-30°C ~ +60°C
Resolution	0.1°C
Accuracy	±0.5°C (-20°C~+40°C), ±1°C (others)
Data Capacity	32000
Usage Type	Disposable
Start Mode	Button Start or Timed Start
Recording Interval	User configurable (10 seconds to 18 hours)
Start Delay	User configurable (0-254 mins)
Form of Report	PDF and CSV format data report
Interface	USB2.0
Protection Grade	IP67

FEATURE

- Temperature measurement and recording
- High precision ±0.5°C and high sensitivity
- Universal USB2.0 communicating interface
- Temperature alarm reporting and mark in red
- Easy operation by pressing button on/off
- No any software needed to take PDF/CSV report out

Disposable temperature data logger TempU09 is a simple portable device with LCD screen specially designed for cold chain. This product is mainly used to monitor and record the temperature data of food, medicine, chemical products and other products in the process of storage and transportation. It is widely used in all aspects of warehouse storage and logistics cold chain, such as refrigerated containers, refrigerated vehicles, refrigerated distribution boxes, refrigerated containers, Cold storage, laboratory, etc. Data reading can be realized through USB interface. After inserting, the report can be generated conveniently and automatically, and no driver needed to be installed when inserting into the computer.

